

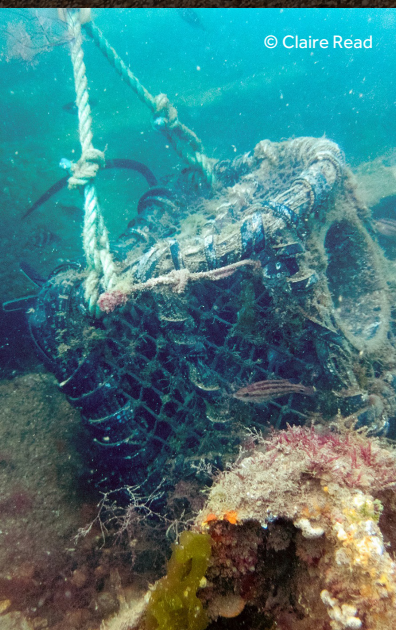


Crustaceans Habitat and Sediment Movement

Fishing has been a part of Selsey Bill, West Sussex and the surrounding areas since the Bronze Age.

Local fisherman tell of huge changes to the fishing grounds in recent years, about the small numbers of lobsters being caught locally, and large influxes of sediment arriving in their fishing grounds. Needing to understand these changes led to the development of the CHASM project in early 2020.

© Channel Coastal Observatory

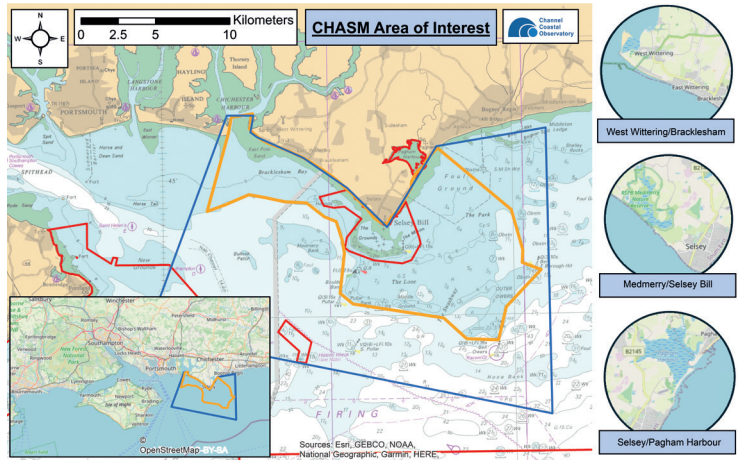


Project aims

The project aims to better understand the environmental, physical and climatological changes which have taken place around Selsey Bill, their causes and drivers;

- determine the impacts of change on the fishing grounds;
- consider mitigation work to facilitate future sustainability;
- develop support and understanding from local coastal communities, visitors and managers through partnership and education;
- and develop close links to other related projects in the area.

Marine Conservation Zones (red), the Fishing Grounds (yellow) and the project area of interest (blue)



© Coastal JJ



Find out more

To learn more about the project, or access the first project report please visit:

<https://peninsulapartnership.org.uk/projects/chasm/>

Or contact one of the main project partners:

Heidi Burgess, H.M.Burgess@brighton.ac.uk
(University of Brighton)

Jane Cunningham, JCunningham@chichester.gov.uk
(Chichester District Council)

Charlie Thompson, celt1@noc.soton.ac.uk
(University of Southampton, Channel Coastal Observatory)



University of Brighton

