

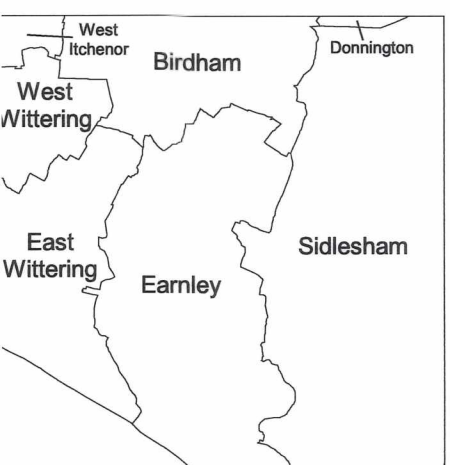


CHICHESTER DEFINITIVE MAP 2004

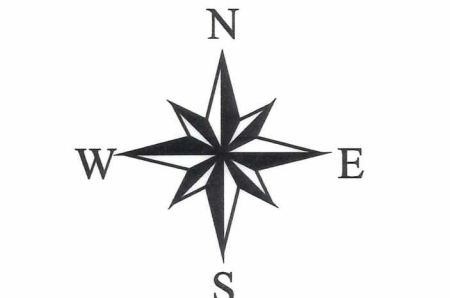
Sheet SZ 89 NW
Scale 1:10 000

KEY	
	Footpath
	Bridleway
	RUPP
	BOAT

Bracklesham, Earnley & Almodington

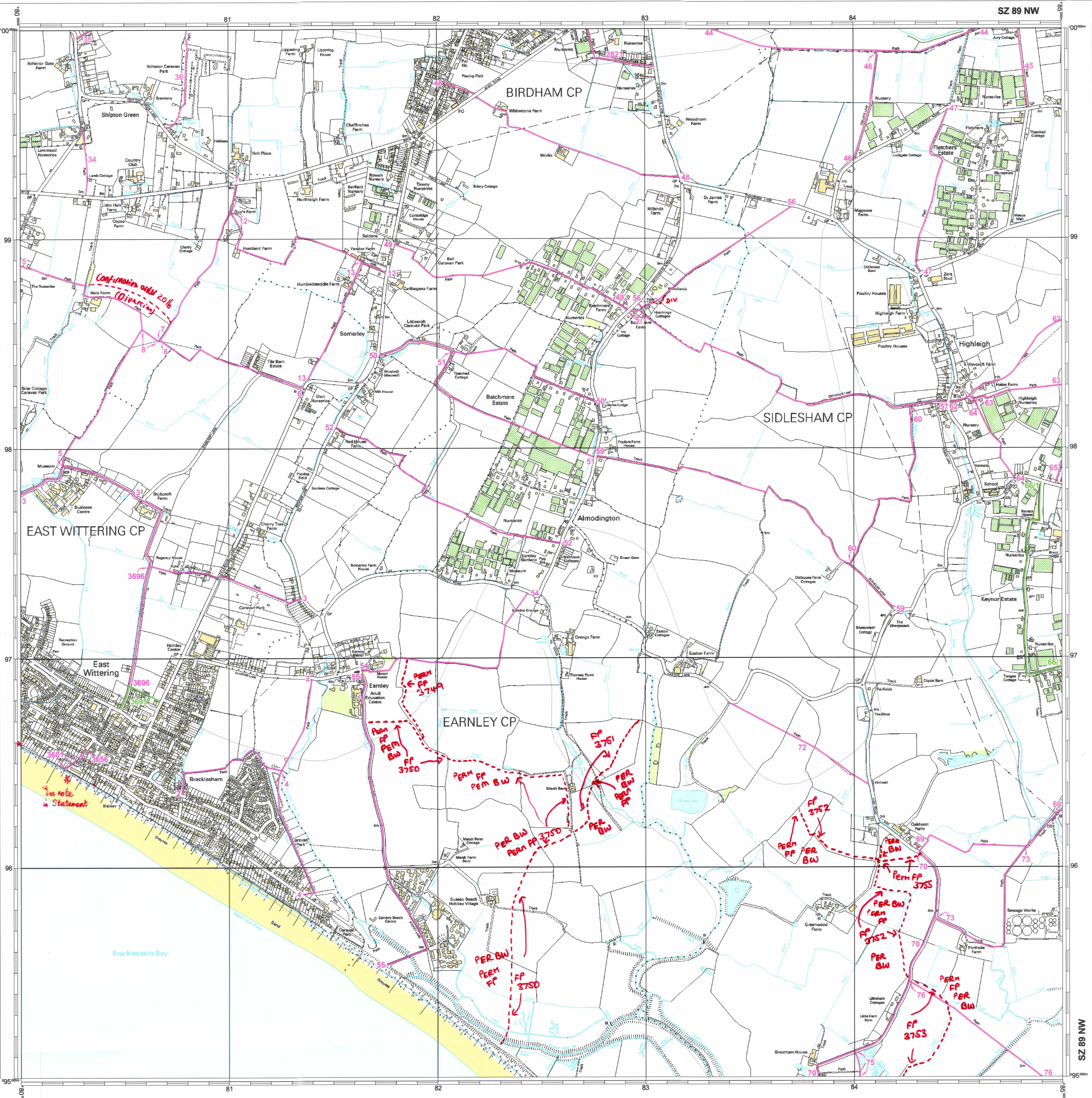


SU 70 SE	SU 80 SW	SU 80 SE
SZ 79 NE	SZ 89 NW	SZ 89 NE
	SZ 89 SW	SZ 89 SE



This map is reproduced from Ordnance Survey material with the permission of Ordnance Survey on behalf of the Controller of Her Majesty's Stationery Office. Unauthorised reproduction infringes Crown copyright and may lead to prosecution or civil proceedings. West Sussex County Council, 100018485, 2004.

SZ 89 NW



Confirmation order 2016 (Diversions)

See note in Statement

PERM FP 3749

PERM FP 3750

FP 3751

PER BW 3752

PERM FP 3753

PER BW 3754

PERM FP 3755

PER BW 3756

FP 3757

PERM FP 3758

PER BW 3759

FP 3760

RELEVANT DATE: 1st June 2004

A copy has been made by the authority of West Sussex County Council pursuant to Section 47 of the Copyright, Designs and Patents Act 1988. Unless that Act provides a specific exception to copyright, the copy must not be copied without the prior permission of the copyright owner.

THE WILDLIFE AND COUNTRYSIDE ACT 1981 - SECTION 57 (3)
This is a sheet of the 2004 Consolidated Definitive Map prepared by the West Sussex County Council showing public rights of way in the former areas of the Borough of Arundel, the City of Chichester, the Urban District of Bognor Regis and the Rural District of Chichester.

Authorised Signatory.....
D. Paul

