

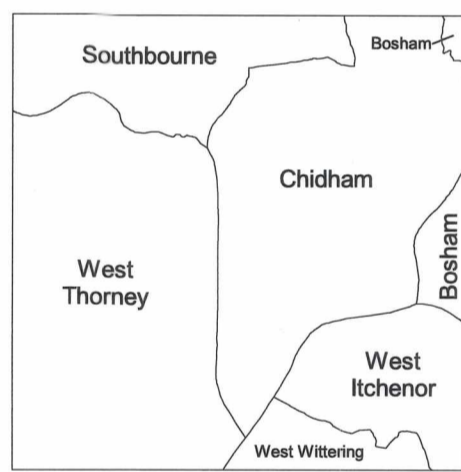


**CHICHESTER
DEFINITIVE MAP
2004**

Sheet SU 70 SE
Scale 1:10 000

KEY	
	Footpath
	Bridleway
	RUPP
	BOAT

**West Thorney,
West Itchenor &
Chidham**

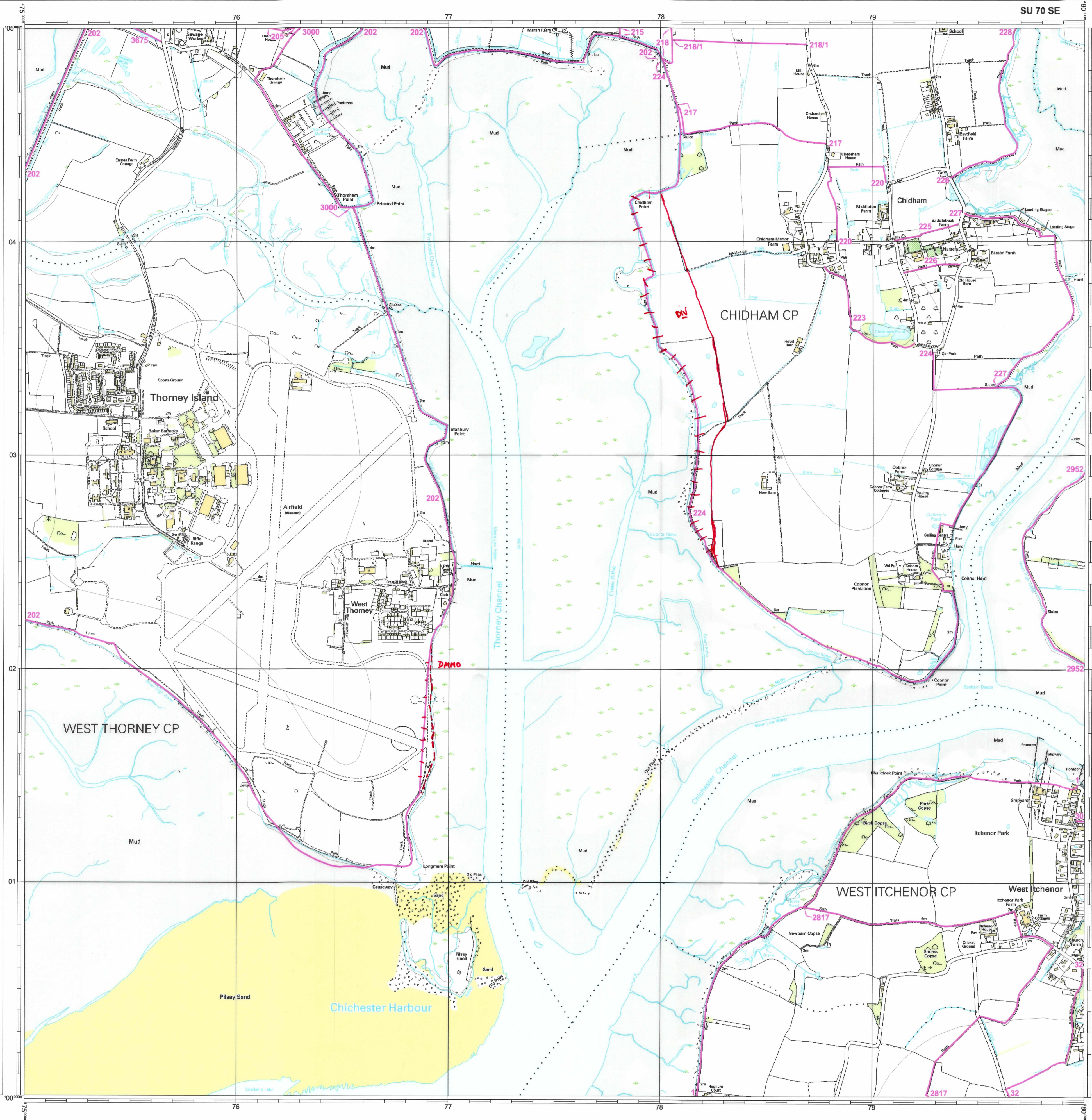


SU 70 NW	SU 70 NE	SU 80 NW
SU 70 SW	SU 70 SE	SU 80 SW
SZ 79 NW	SZ 79 NE	SZ 89 NW



This map is reproduced from Ordnance Survey material with the permission of Ordnance Survey on behalf of the Controller of Her Majesty's Stationery Office © Crown copyright. Unauthorised reproduction infringes Crown copyright and may lead to prosecution or civil proceedings. West Sussex County Council, 100018485, 2004.

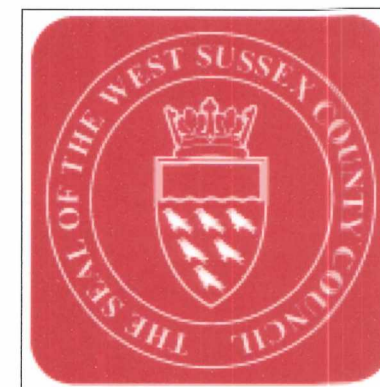
SU 70 SE



RELEVANT DATE: 1st June 2004

A. Paul

Authorised Signatory.....



This copy has been made by the authority of West Sussex County Council pursuant to Section 47 of the Copyright, Designs and Patents Act 1988. Unless that Act provides a relevant exception to copyright, the copy must not be copied without the prior permission of the copyright owner.

THE WILDLIFE AND COUNTRYSIDE ACT 1981 - SECTION 57 (3)
This is a sheet of the 2004 Consolidated Definitive Map prepared by the West Sussex County Council showing public rights of way in the former areas of the Borough of Arundel, the City of Chichester, the Urban District of Bognor Regis and the Rural District of Chichester.