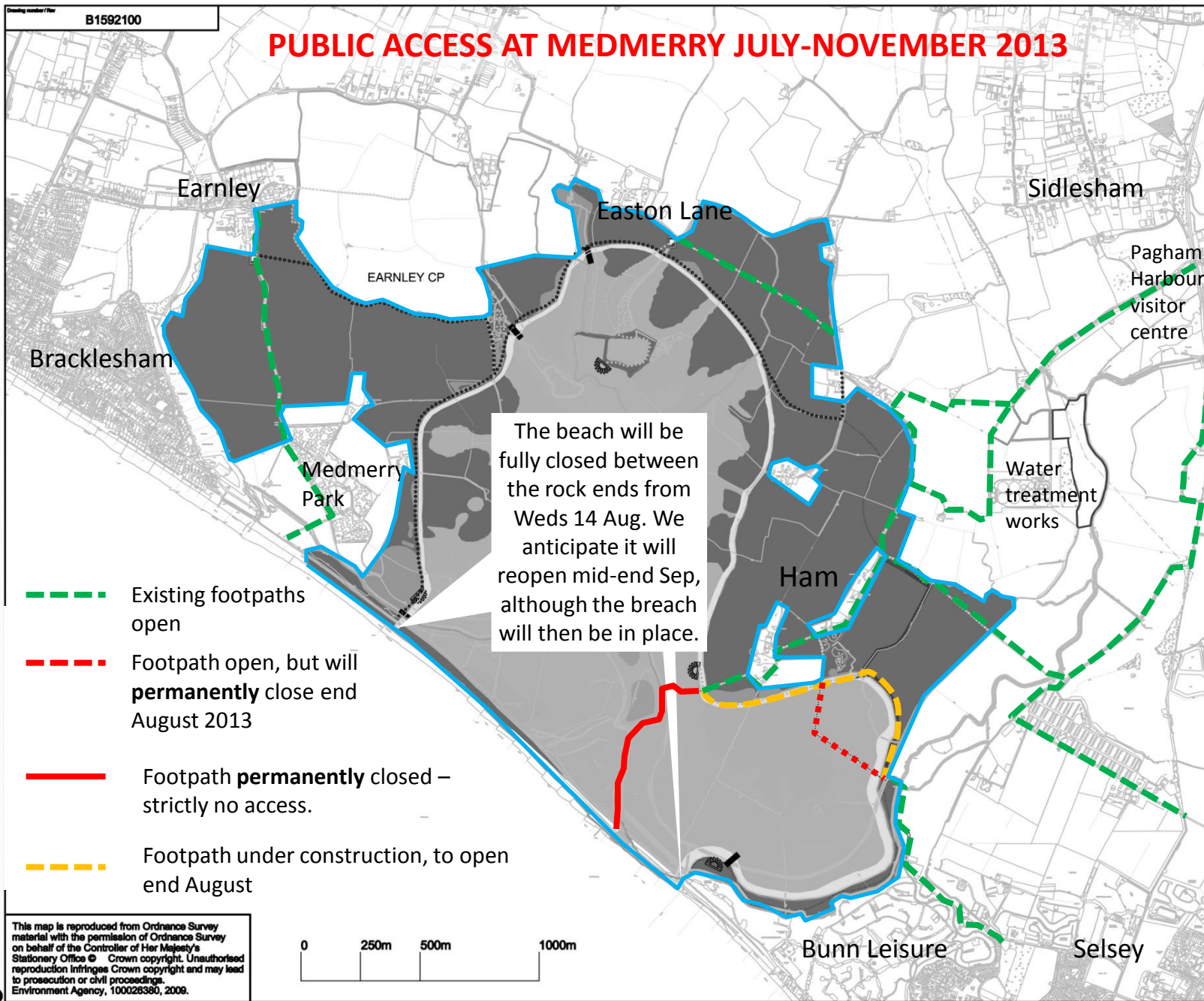


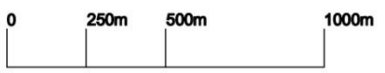
PUBLIC ACCESS AT MEDMERRY JULY-NOVEMBER 2013



- - - Existing footpaths open
- - - Footpath open, but will **permanently** close end August 2013
- Footpath **permanently** closed – strictly no access.
- - - Footpath under construction, to open end August

The beach will be fully closed between the rock ends from Weds 14 Aug. We anticipate it will reopen mid-end Sep, although the breach will then be in place.

This map is reproduced from Ordnance Survey material with the permission of Ordnance Survey on behalf of the Controller of Her Majesty's Stationary Office © Crown copyright. Unauthorised reproduction infringes Crown copyright and may lead to prosecution or civil proceedings. Environment Agency, 100026380, 2008.



The blue line marks the Environment Agency's Medmerry construction scheme boundaries.

There is strictly NO public access within the scheme except on the open footpaths marked on this map.

New rights of way are planned to open in early November 2013.