

As this leaflet shows, coastal change can be damaging and expensive, but it can also bring opportunities.

But one thing is sure - coastal change happens. So how do we cope with it? Do we try to keep things the same or do we adapt? Who is responsible? And who will pay?

The answers are often complex. Sometimes there is no-one responsible for putting it right, and there certainly isn't always the money.

But understanding who is doing what means you can help in seeking the best solution. We've put together some ideas for ways to get involved in the future of your coast...



Nine ways to get involved in your coast

- 1. Check out how the Peninsula's coast will be managed in the future.** The Pagham to East Head Coastal Defence Strategy is on the Environment Agency's website.
- 2. Have a look at the websites highlighted in this leaflet and contact the organisations and groups if you want to find out more.**
- 3. Keep up to date with indicative flood risk maps and flood warnings on the Environment Agency website.**
- 4. Sign up for the Environment Agency email updates about the Medmerry Managed Realignment scheme:** www.environment-agency.gov.uk/homeandleisure/floods/109062.aspx
- 5. Keep an eye on the local press. They regularly cover issues affecting the Peninsula's coast.**
- 6. Take a look at the specialist websites related to the Peninsula for a local viewpoint.**
- 7. Check out the ideas for a Selsey Coastal Trust, which is trying to find ways for the local community to support the coastal defence work.**
- 8. Each time you're on the coast, notice whether the beach looks different from your last visit.** Some change happens daily, whilst other changes take much longer.
- 9. Enjoy all that our coast has to offer** whilst understanding that it has always been changing and will continue to do so.



Chichester Coastal Change Pathfinder Project
www.peninsulapartnership.org.uk
CoastNet: www.coastnet.org.uk
and coastalliteracy.wordpress.com

Below you will find contact details for organisations concerned with coastal issues in this area. This is not an exhaustive list. Town and Parish Councils are actively involved and you may find details of local residents groups in your area within the main websites.

Chichester District Council
www.chichester.gov.uk contact@chichester.gov.uk
01243 785166

Environment Agency
www.environment-agency.gov.uk
enquiries@environment-agency.gov.uk
08708 506 506

Natural England
www.naturalengland.org.uk enquiries@naturalengland.org.uk
0845 600 3078

West Sussex County Council
www.westsussex.gov.uk
01243 777100

Chichester Harbour Conservancy
www.conservancy.co.uk harbourmaster@conservancy.co.uk
01243 512301

National Trust
www.nationaltrust.org.uk enquiries@nationaltrust.org.uk
07799 0725937

RSPB
www.rspb.org.uk
01273 775333

East Head Coastal Issues Advisory Group and West Wittering Flood Defence Group
www.westwitteringparishcouncil.gov.uk
info@westwitteringparishcouncil.gov.uk

Manhood Peninsula Partnership
www.peninsulapartnership.org.uk
info@peninsulapartnership.org.uk

Manhood Peninsula Steering Group
www.mpsg.org.uk info@mpsg.org.uk

Manhood Wildlife and Heritage Group
www.mwhg.org.uk chairman@mwhg.org.uk

Pagham Harbour Coastal Issues Advisory Group
www.paghamparishcouncil.gov.uk paghampc@gmail.com

Selsey Coastal Trust
www.selseycoastaltrust.org.uk info@selseycoastaltrust.org.uk

Save Our Selsey (SOS)
www.saveourselsey.org info@saveourselsey.org



Coastal Change on
The
Manhood
Peninsula

Your guide to the issues & how to get involved

The Manhood Peninsula, like all coastal places, has its own special identity. Whether you are a resident or visitor you will feel the uniqueness of this landscape, its wildlife, and the seaside way of life. >>



1 Visitors and residents alike enjoy our coast. The beaches are at the heart of life on the Peninsula.



2 People come here to fish, sail, surf, walk, cycle, enjoy the wildlife, and simply to relax.



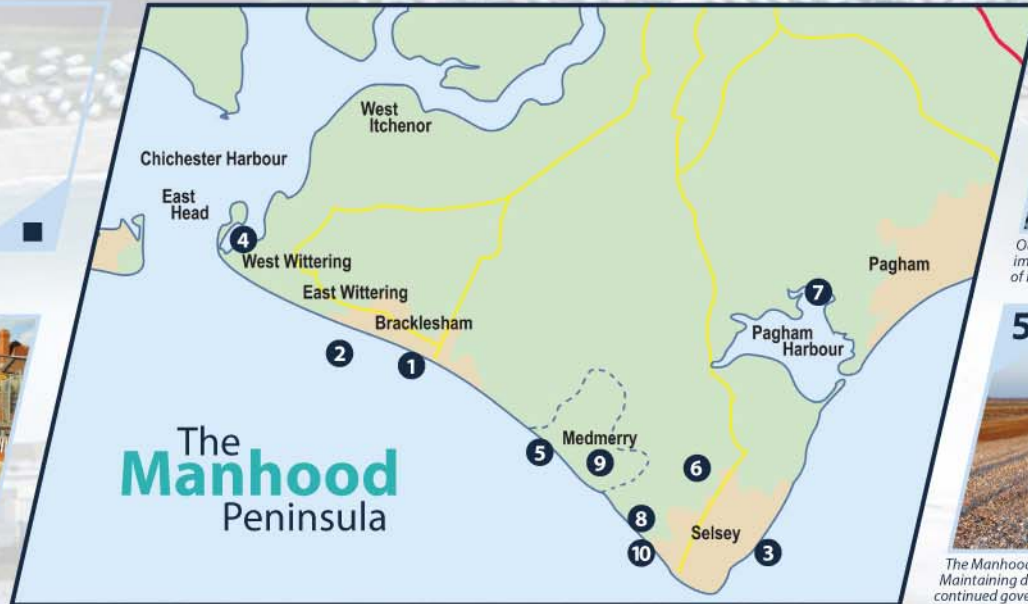
3 The coast has its own industries. The fishing fleet at Selsey is an important part of the area's identity.

11

Get involved!
See reverse.



10 Coastal change can be destructive and upsetting. Flooding and erosion are real risks to the communities along this dynamic coastline.



4 Our saltmarshes and mudflats are protected as internationally important areas for the conservation of wild birds, such as this flock of Brent Geese.



5 The Manhood Peninsula coastline has changed more than most. Maintaining defences can be very expensive and in many cases continued government funding is unlikely. Alternative funding will need to be explored and adaptation plans developed.



9 Coastal change can bring opportunities. The coastline at Medmerry will be realigned (see highlighted area) by building new defences inland and allowing the land to flood in a controlled way. This will reduce the flood risk to Selsey and create new habitats and access.



8 Coastal communities have changed quite dramatically too. Huge caravan sites have sprung up, the population has aged, and the economy has become heavily reliant on tourism.



7 Pagham Harbour is a prime example of change. Once a bustling port, it was drained for farmland, but was reclaimed by the sea during a violent storm in 1910. It has become an important nature reserve.



6 Look at how the sea has changed and shaped the outline of the Peninsula - this image shows the development of the coastline between 1672 and 1909. Selsey was once an island, 'Seal Island', believed to have been used by smugglers.

"In my lifetime I have played cricket, grown onions and caught prawns on the same spot".

Retired second coxman,
Selsey RNLI 2011

Maps featured are reproduced from Ordnance Survey material with the permission of Ordnance Survey on behalf of the Controller of Her Majesty's Stationary Office.